



PHILIPS HIGH SCHOOL
SUCCESS, TOGETHER, ASPIRE, RESPECT

Transition Workbook



Name _____

Primary School _____

Welcome to Philips High School



Moving from Primary to Secondary School is an exciting, but sometimes scary time.

A new building, new rules, new teachers, new routines and new friends are just some of the changes you will experience.

This booklet will help you get used to some of the routines and features of Philips High School.

We look forward to you being part of our school.

Going to secondary school how do you feel?

These could be useful to think about when you think about changing school.

Use two different coloured highlighters, highlight the phrases that you are looking forward to in one colour; use a different colour for those you are worried about.

Making new friends	Learning a new timetable
Dinner time	Being with my form
Having a different uniform	Being on time
Finding way around	Break times
Getting to school	Learning new subjects
Meeting others my own age	Joining clubs
Being with friends	School rules
Homework	Meeting my new tutor
Meeting my new teachers	Being able to do the work
Being with older pupils	Getting changed for sport / PE

All about me



Draw a self portrait here.

Name:

Birthday:

My Primary School:

Eye Colour:

Hair Colour:

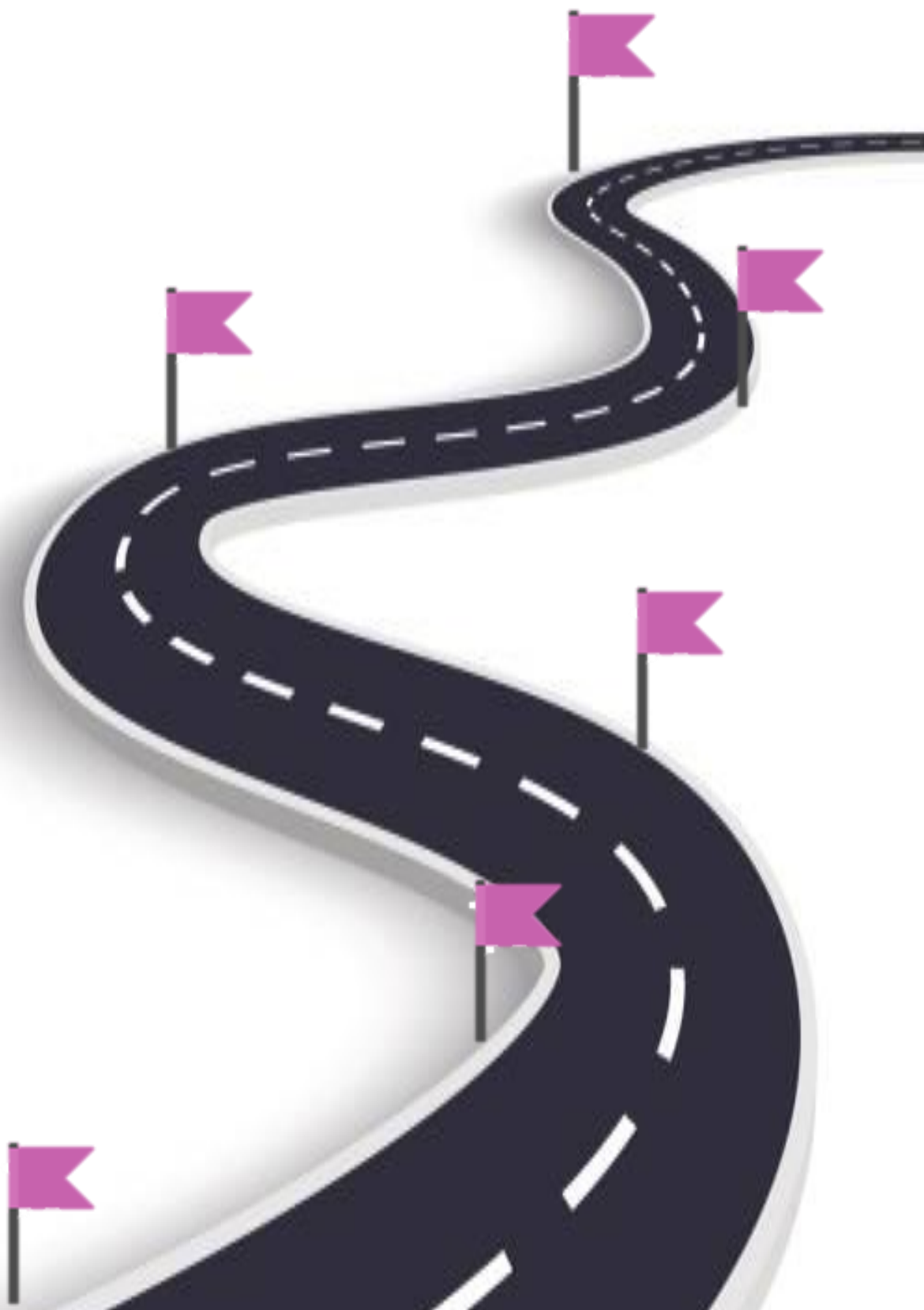
Height:

Favourite Colour	
Favourite Animal	
If I could have a superpower, I'd....	
Favourite School Subject	
Best place I've ever been to...	
Dream country to visit...	
If I could travel back in time, I'd go to...	
My dream job is...	

My journey so far



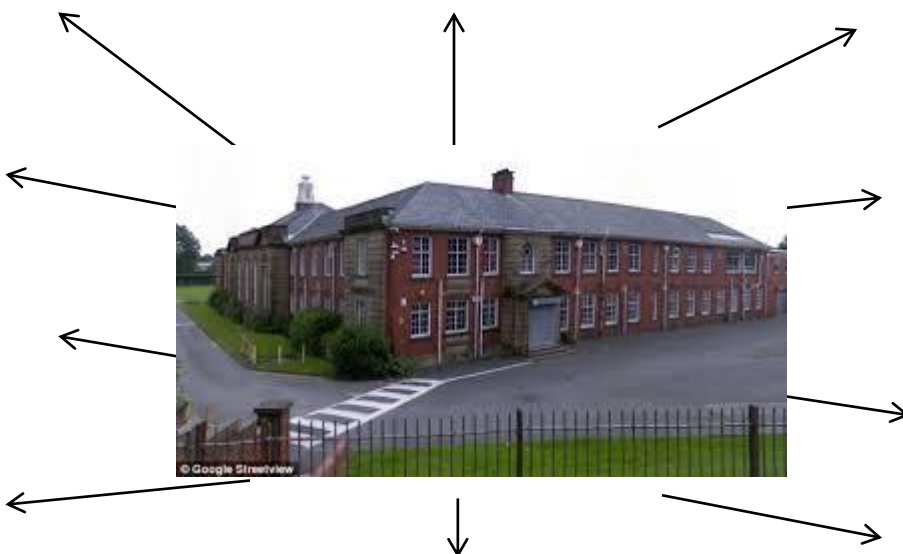
Life is a journey. Think back through primary school and write down your favourite memories or events next to the flags, that have shaped you to become the amazing person you are!



My new Secondary School

Full Name of the School	
School Address	
School Telephone Number	
Name of the Head Teacher	
School Starts at	
School Finishes at	
I will get to school by:	
How long will it take you to get to school?	
What time will you have to leave home?	

Add 10 words around the image below to describe your new school .



Moving to Philips High School

- List 4 things you are most excited about moving to Philips High:

1. _____
2. _____
3. _____
4. _____

- List 4 things that will help you when moving to Philips High:

1. _____
2. _____
3. _____
4. _____

- List 4 differences between your primary school and Philips High:

1. _____
2. _____
3. _____
4. _____

If you or your parents/carers have any questions or worries, you can ask us by completing the google form on the website. This can be found on the transition tab. We will get back to you.

Subjects at Philips High School

Find the subjects below in the Word search – they are vertical, horizontal backwards and diagonal!

M	A	F	S	E	H	M	G	E	O	H	I	M	J	E	E	R
F	M	A	M	W	S	L	U	S	M	I	S	E	T	T	I	E
R	U	D	A	N	C	E	Z	S	A	C	P	N	F	H	A	L
A	F	G	T	R	D	P	W	R	I	I	F	G	O	I	N	I
H	S	R	H	P	G	R	T	E	N	C	R	T	R	C	A	G
J	T	A	S	L	U	B	N	Y	R	A	E	E	M	S	S	I
T	U	B	J	E	I	C	Q	L	E	R	N	X	T	A	S	O
E	E	A	U	H	E	M	U	A	H	S	C	D	I	N	E	U
N	F	X	L	G	E	O	G	R	A	P	H	Y	M	D	M	S
G	I	M	T	V	M	A	I	T	Y	E	O	A	E	M	B	S
L	O	A	I	I	O	T	Y	G	O	L	O	N	H	C	E	T
I	P	T	E	E	L	G	R	D	U	O	E	R	A	R	Y	U
S	P	U	F	O	S	E	E	K	R	M	P	T	T	A	E	D
H	I	S	T	O	R	Y	S	C	S	A	S	M	E	L	R	I
E	N	J	V	E	P	I	F	J	N	O	M	U	R	S	B	E
J	K	C	H	A	R	A	C	T	E	R	N	A	R	P	U	S
Y	Z	X	T	L	S	V	Z	C	O	M	P	U	T	I	N	G

Maths
English
Science
Geography
History
Art
Music
PE

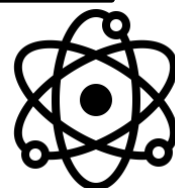
Drama
French
Religious Studies
Technology
Character
Computing
Assembly
Form Time

Subjects at Philips High School

Match up the subject to the correct icon



Maths



English



Science

Geography



History

Art



Music



PE



Drama

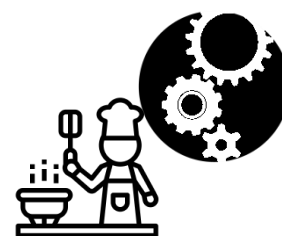


Character

Religious Studies



Technology



Catering

Computing



French



Form Time



An example timetable



	Monday	Tuesday	Wednesday	Thursday	Friday
Tutor 08:40-09:00	ASSEMBLY	FORM TIME	ASSEMBLY	FORM TIME	FORM TIME
Period 1 09:00-10:00	GEOGRAPHY RAG F7	MATHS SLT F5	GEOGRAPHY RAG F7	PE KCI SH	COMPUTER SCIENCE DSY G10
Period 2 10:00-11:00	CHARACTER CCE G16	SCIENCE MGA F16	ART VCG G26	HISTORY TFG F14	MATHS SLT F5
BREAK 11:00-11:15					
Period 3 11:15-12:15	MATHS SLT F5	MUSIC JDL G19	DRAMA RDN G18	RELIGIOUS STUDIES CSE F8	FRENCH CHY G12
Period 4 12:15-13:15	HISTORY TFG F14	TECHNOLOGY CCE G17	MATHS SLT F5	FRENCH CHY G12	ENGLISH JGG G3
LUNCH 13:15-13:45					
FORM TIME 13:45-14:00	TUTOR AWI F4	TUTOR AWI F4	TUTOR AWI F4	TUTOR AWI F4	TUTOR AWI F4
Period 5 14:00-15:00	ENGLISH JGG G3	ENGLISH JGG G3	PE KCI SH	SCIENCE MGA F16	SCIENCE MGA F16
DETENTIONS 15:00-15:45	Detentions run every day for pupils who have 2 or more behaviour points on a day.				

ENGLISH → SUBJECT
 JGG G3
 ↙ ↘
 INITIALS OF TEACHER ROOM

At high school we move rooms for EVERY lesson.

- The rooms start with a 'G' or an 'F' what do you think these mean?

.....

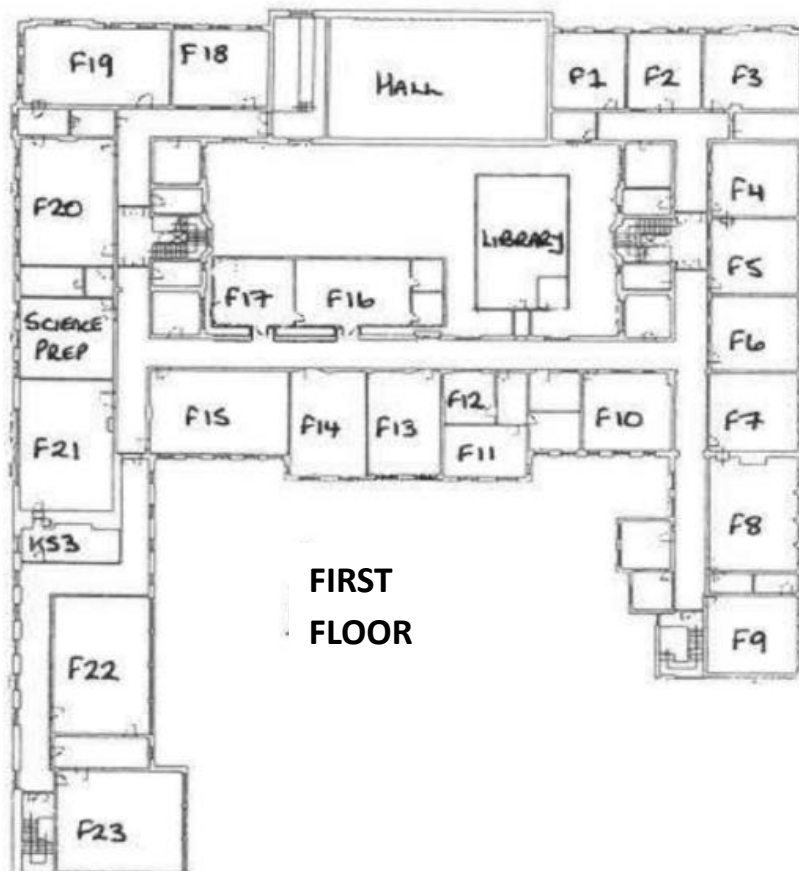
- How many minutes does each lesson last?
- How long is lunch and break combined?
- How many times a week would you have:
Maths?..... English?:
- Which days would you need your PE kit?

A Map of Philips High School



On the **GROUND** floor you will find classrooms **G1-G27** for:

- English
- Computing
- French
- Technology
- Drama
- Music
- Art
- Hall
- Canteen



On the **FIRST** floor you will find classrooms **F1-F23** for:

- Maths
- History
- Geography
- Religious Studies
- Learning Support
- Science
- Library
- KS3 Hub

Your journey to High School



Getting to Philips High School safely is just as important as being there. In the box below, draw the route you are going to take to school (whether that's walking, cycling, driving or by bus). Identify spots where there could be hazards (e.g. busy roads) and explain how you will manage this safely!

Packing your bag



At secondary school, you will be moving around to different classrooms for different lessons. You could be in 7 classrooms in one day. This means that you need to bring all the equipment you will require with you for the day. You can keep larger items such as your PE kit in your locker, however you can only go to your locker before school, at break and lunchtime and at the end of the day.

YOU WILL NEED TO BE ORGANISED!

What basic equipment do you need to bring with you every day when you start at Philips?



What subjects will you be studying in your first year at Philips?



REMEMBER TO LOOK AT YOUR TIMETABLE EVERY NIGHT AND PACK YOUR BAG THE NIGHT BEFORE YOU GO SCHOOL!

What else will you need to bring to school on some days?

What will be your morning routine?

Expectations at Philips High School

Be a STAR at Philips High School. Our core values and expectations at Philips are all linked through STAR:

SUCCESS, TOGETHER, ASPIRE, RESPECT

This applies to the way we choose to conduct ourselves, the way that we behave towards other people, and the way that we behave in our lessons. They are expectations, because we are expected to behave in this way; it is not a choice.

The expectation that we have is that we all behave in a way that means that we are calm, collected and respectful towards one another, and that we arrive for our lessons punctual and prepared.

Match the correct description to each letter of the STAR logo.

Acting as an ambassador role

Consistent punctuality over the whole year

Being respectful of other peoples beliefs

Get achievement points for my work and actions

Working successfully as part of a team

Being the best I can be in everything I do

Having your shirt tucked in neatly

Contributing to lessons

High level of respect shown to all

Saying good morning to people as you pass

Supporting others

Holding the door open for a teacher

Having a pen, pencil and ruler in lesson



Helping with Breakfast Club

Turning up on time to lessons

Going above and beyond with your work

Staying calm if something goes wrong

Being respectful to other staff and students

Sitting with someone who is alone at lunch

Apologising if you have done something hurtful

Trying my best in all lessons

Discussing issues with a teacher rather

Completing your homework to the best of your ability

Giving someone a compliment

Asking for help when needed

Rules and respect



What positive behaviour have you seen in your primary school and in your lessons?	What negative behaviour have you seen in primary school and in your lessons?

Respect



What is respect?

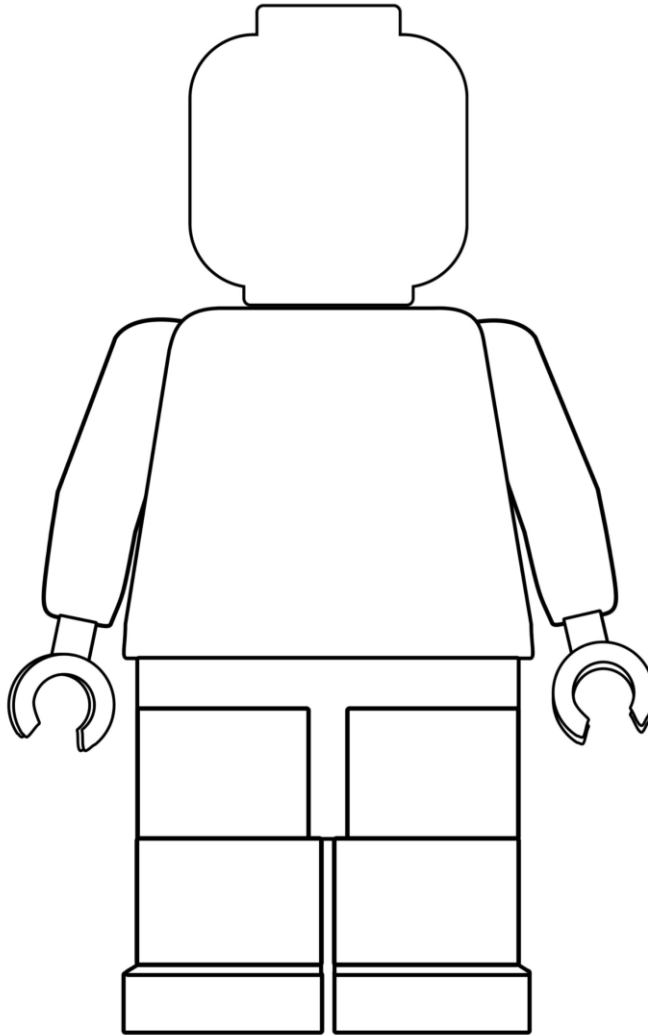
In what ways should pupils need to show respect at Philips High School?

-
-
-
-
-
-
-
-

Wear you uniform with pride



One of the different things about moving to secondary school is the change in what you will wear. At Philips High School we pride ourselves in looking smart and professional at all times. Use the school website or the information booklet to draw and label the school uniform you will wear onto the Lego figure.



Why is wearing the correct school uniform important?
